

# ME 2051 Resistance thermometer with standard plug

## Construction

<b>Design</b>	Mineral insulated resistance thermometer (RTD) for use up to +600°C
<b>Usage</b>	As a straight sensor however bending is allowed starting 50mm from the tip
<b>Sheath material</b>	SS 316 - (Wst 1.4401)
<b>Insulation</b>	MgO Magnesium oxide
<b>Diameter</b>	To select 3 or 6 mm
<b>Length</b>	Customer to specify

## Connection

<b>Connector</b>	Standard 2 pole plug with round pins
<b>Model</b>	1065 Cu, 2-pole / 1061 Cu, 3-pole / 1060D Cu, 4-pole
<b>Mounting adaptor</b>	3mm with crimp adaptor / 6 mm with compression adaptor

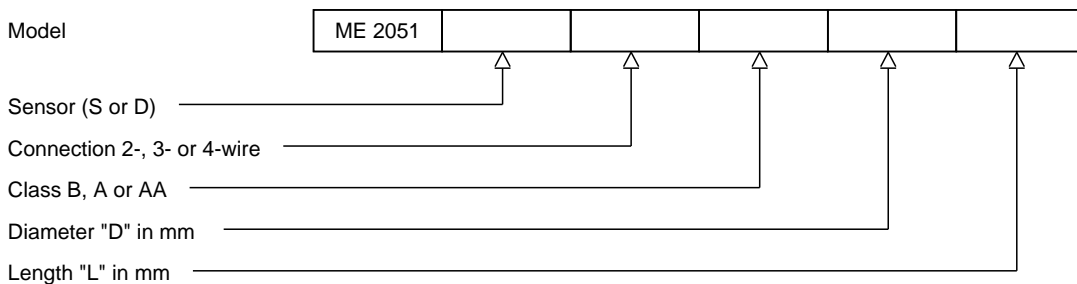
## Sensor

	Single or Duplex Pt100
<b>Accuracy</b>	According IEC 60751 Cl. B, A or AA
<b>Measuring range</b>	-20°C to +400°C standard, -220°C to +600°C optional
<b>Connection</b>	2-, 3- or 4-wire system
<b>Insulation test</b>	Tested 500 Vdc @ 20°C
<b>Insulation resistance</b>	Minimum 100Mohm



## Ordering code

\*This datasheet is purely indicative, build-up of model code may vary from this datasheet.



H2-1 Rev.0 7/07