

# ME 2090 Resistance thermometer with Lemo plug

## Sheath

<b>Construction</b>	Mineral insulated
<b>Material</b>	SS 316 - (Wst 1.4401)
<b>Insulation</b>	MgO
<b>Diameter</b>	3 or 6 mm, customer to specify
<b>Length</b>	Customer to specify

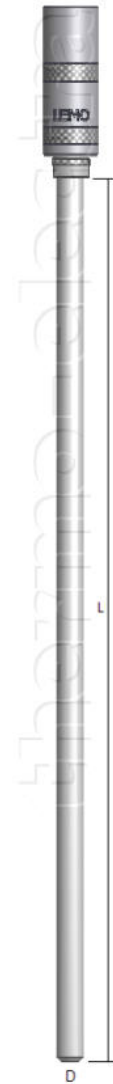
## Style / Connection

Standard LEMO plug

## Sensor

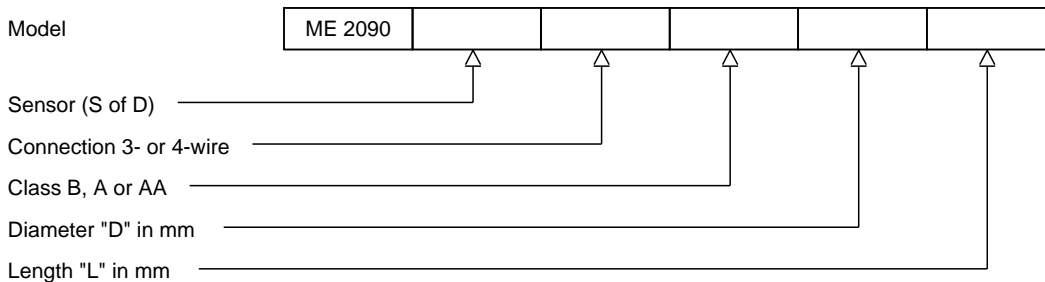
Single or Duplex Pt100

<b>Accuracy</b>	According IEC 60751 Cl. B, A or AA
<b>Style / Connection</b>	3-wire system standard, 4-wire system optional
<b>Range</b>	-20°C to +400°C standard, -220°C to +600°C optional
<b>Testing</b>	Tested at 500 Vdc @ 20°C
<b>Insulation resistance</b>	Minimum 100Mohm



## Ordering code

\*This datasheet is purely indicative, build-up of model code may vary from this datasheet.



H2-1 Rev.0 7/07