

# KE 2085 General purpose resistance thermometer

## Sheath

<b>Construction</b>	Closed-end tube
<b>Material</b>	SS 316 - (Wst 1.4401) standard, other materials possible
<b>Diameter</b>	Customer to specify
<b>Length</b>	Customer to specify

## Cable

PVC, PE, glassfiber, silicone or FEP, customer to specify

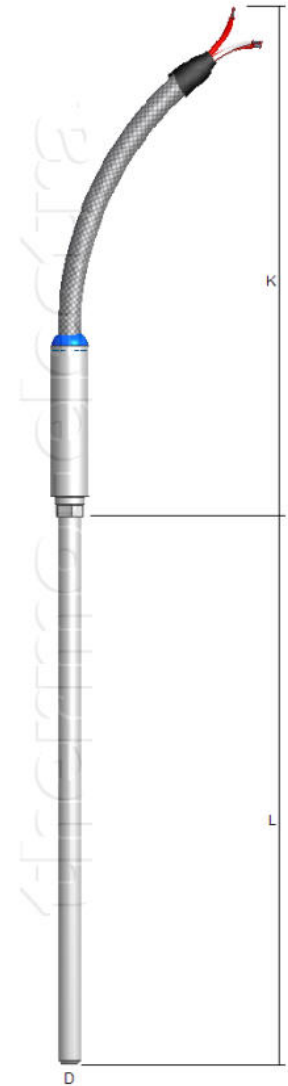
## Cable length

Customer to specify

## Sensor

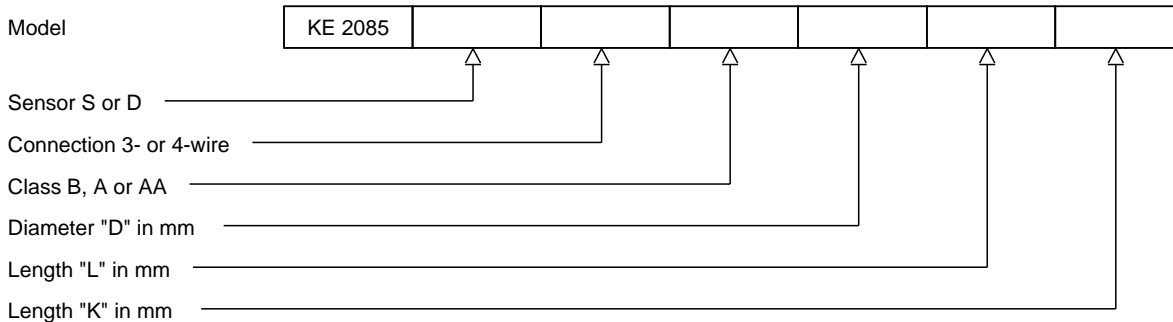
Single or Duplex Pt100

<b>Accuracy</b>	According IEC 60751 Cl. B, A or AA
<b>Style / Connection</b>	3-wire system standard, 4-wire system optional
<b>Range</b>	Standard -20 / +400°C, optional -220 / +600°C
<b>Testing</b>	Tested at 500 Volt @ 20°C
<b>Insulation resistance</b>	Minimum 100Mohm



## Ordering code

\*This datasheet is purely indicative, build-up of model code may vary from this datasheet.



H2-1 Rev.0 7/07