

# BE 2084 Pipe-clamp resistance thermometer

## Sheath

<b>Construction</b>	Adjustable band, stainless steel
<b>Material</b>	Stainless steel contact block 8 x 8 x 30mm standard, other dimensions possible
<b>Diameter</b>	Customer to specify

## Cable

<b>Construction</b>	FEP/PFA insulated flexible tinned copper wire, glass filling and stainless steel braiding up to +240°C
<b>Cable length</b>	1000mm standard, other lengths possible

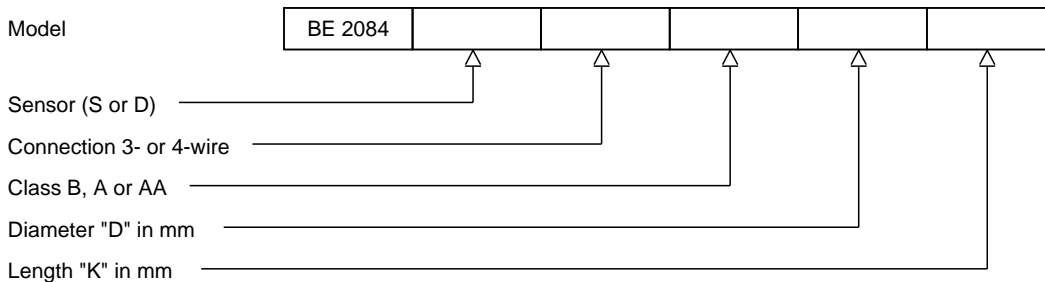
## Sensor

	Single or Duplex Pt100
<b>Accuracy</b>	According IEC 60751 Cl. B, A or AA
<b>Style / Connection</b>	3-wire system standard, 4-wire system optional
<b>Range</b>	-220 / +240°C
<b>Insulation resistance</b>	Minimum 100Mohm
<b>Testing</b>	Tested at 500 Vdc / 20°C



## Ordering code

\*This datasheet is purely indicative, build-up of model code may vary from this datasheet.



H2-1 Rev.0 7/07