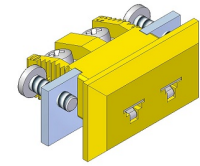


TE1530 Mini panel jack with bracket



Application

Female panel connector	Thermocouple and RTD circuits
Contacts	Springloaded thermocouple contacts
Materials	Glass filled thermoplastic body with original thermocouple material contacts

Temperature rating

Temperature limit	Maximum 200°C
--------------------------	---------------

Construction

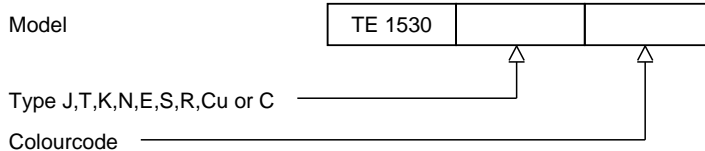
Body	Glass filled thermoplastic material
Design	Self gripping stainless steel clip
Molded barriers	Prevent short circuit

Wire size

Accepts wires	From 0,002mm to 0,6mm.
Style / Connection	Easy wire connection through sandwich construction

Ordering code

*This datasheet is purely indicative, build-up of model code may vary from this datasheet.



H9-2Rev.0 7/07