

TE1031 Standard panel jack with bracket

Application

Female panel connector	Thermocouple and RTD circuits
Contacts	Springloaded thermocouple contacts
Materials	Glass filled thermoplastic body with original thermocouple material contacts

Temperature rating

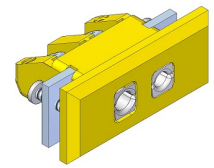
Temperature limit	Maximum 220°C
--------------------------	---------------

Construction

Body	Glass filled thermoplastic material
Design	Stainless steel bracket mounted with 2 screws
Molded barriers	Prevent short circuit

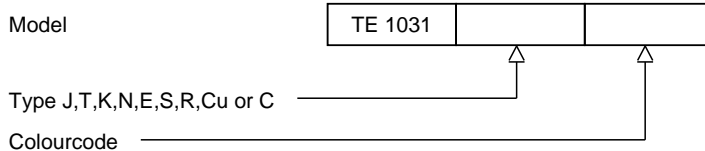
Wire size

Accepts wires	From 0,2mm to 2.0mm
----------------------	---------------------



Ordering code

*This datasheet is purely indicative, build-up of model code may vary from this datasheet.



H9-2Rev.0 7/07